



## „ŽEMAITIJA – 2014“

**III Event of 2014 Lithuanian Rally Championship**  
**II Event of 2014 Lithuanian Rally Sprint Championship**  
**II Event of 2014 Belorussian Rally Championship**  
**Rally „Žemaitija - 2014“**

**25-26 of July, 2014**

# **RALLY GUIDE 1**

INVITATION - PRESENTATION.....	3
II. CONTACTS .....	5
2.1. ADDRESS AND CONTACT INFORMATION OF THE ORGANIZER .....	5
2.2. RALLY HEADQUARTERS WORK SCHEDULE .....	5
2.3. STEWARDS OF THE MEETING.....	5
2.4. OFFICIALS OF THE RALLY.....	5
III. PROGRAM .....	6
IV. RECONNAISSANCE.....	6
V. DEFINITION AND PRINCIPAL OBLIGATIONS .....	7
5.1 GENERAL INFORMATION .....	7
5.2. CARS.....	7
5.3. ENTRY FEES .....	7
VI. SERVICE PARK.....	8
VIII. TEST STAGE.....	9
IX. MEDICAL AID.....	9
X. ACCOMMODATION PLACES .....	9
XI. ACCREDITATION .....	10
XII. FUEL.....	10
XIII. ITINERARY CARDS. ....	11

## INVITATION - PRESENTATION

**The Rally „Žemaitija – 2014“ will start on the 25th of July in Kelmė . We kindly invite you to become a participant of this race!**

The participants of rally will have to overcome the route consisting of 11 special gravel stages. The route will be arranged in beautiful places of Kelmė region. The rally base will be established in Kelmė Draugystės park and here the rally will finish on 31st of July.

This will be the third event of Lithuanian Rally Championship and the second event of Lithuanian Rally Sprint Championship, as well as the second event the Belarusian Rally Championship. In this rally is sure to be guests of the neighboring countries (the first event of the Belarusian Rally Championship Ramunas Čapkauskas and Tomas Šipkauskas won the absolute classification). For example, in Belarusian Rally Championship takes part experienced Janis Vorobjovs from Latvia, so we should see him in the "Žemaitija - 2014" rally. It is expected to see about 50 participants of Lithuanian Rally Championship , 10 are expected to arrive from Belarus, plus Rally Sprint Championship participants and guests from Latvia, Estonia and Poland - the company together is really cool and fun.

Saturday will have to overcome the 11 special stages with a total length - about 123 miles. In the distance will be four special stages, passing two times, and three special stages crews will drive once. For the Rally Sprint Championship participants will be twice shorter length - six special stages that need to be overcome once, the total length - 61 km.

This year “Žemaitija” rally track participants will be familiar from the previous year's "Saulė" rallies. Traditional sections of the region, which is everything - fast straights and wide and very tortuous technically difficult sections and forest roads with relatively smooth surfaces. In the rally will be some special stages from previous years and enough of new segments. All the special stages will be for free - rally fans which are accustomed to the ticket or passport waiting in this race organizer's pleasant surprise.

Friday, July 25th, the participants will be the technical commission and the Shakedown, and racing will begin on Saturday 9 :00 clock in the morning.

During this rally Kelmė Automobile Sports Club will celebrate 10 years anniversary of existence. Organizers, general sponsor company „Agrotech" and Kelme district municipality donates to all the evening festive concert (during the time-break 21:00 will be prize awarding ceremony).

Entry fees are set out in paragraph 7 of the rally guide. Please transfer the entry fee to the account of Kelmė ASC till July 14th. More information about the rally you can found in this rally guide and [www.kelmesask.lt](http://www.kelmesask.lt) ,[www.lasf.lt](http://www.lasf.lt) . We'll be happy to answer to your questions about this event

**We will appreciate, if you fill the entry form and return it to us as soon as possible. Then we'll send you the more detailed information about the race.**

With best regards,  
Tomas Savickas  
President of Kelmė Automobile Sports Club  
Mobile: +370 686 36522

e-mail: [kelmesask@gmail.com](mailto:kelmesask@gmail.com)

Rally „Žemaitija – 2014”



The winners of rally in Žemaitija tracks 2009, 2010, 2011 and 2013 years  
Vytautas Švedas and Žilvinas Sakalauskas



2008 Belarussian rally champion Tomas Savickas,  
the organizer of this rally



Always the crowd favorite and expected  
Dovilas Čiutelė



After a pause in the rally “Žemaitija” tracks  
return local crew  
Vilmantas Pupius and Gediminas Račas

## II. CONTACTS

### 2.1. ADDRESS AND CONTACT INFORMATION OF THE ORGANIZER

The name: Kelmė Automobile Sports Club  
Address: Statybininkų str. 17. Kelmė

**Contacts: Mobil phone: +370 686 36522; +370 682 27744 ;**  
**E-mail: [kelmesask@gmail.com](mailto:kelmesask@gmail.com)**

### 2.2. RALLY HEADQUARTERS WORK SCHEDULE

Date: 25-07-2014 (Friday)

Place: The Kelmė region museum, Dvaro str. 15, Kelmė

Time: 7:30 till 22:00

Date: 26-07-2014 (Saturday)

Place: Draugystės park, Kelmė, N 55°37'44.0", E 22°56'43"

Time: 8:30 till 21:00

**Contacts: +370 612 07151 Clerck of the Course; +370 686 85146 Secretariat;**  
**+370 682 27744 Director of rally**

### 2.3. STEWARDS OF THE MEETING

Chairman	Donatas Liesis	+370 614 81141
Stewards	Algirdas Bilevičius	+370 687 74241
	Gintaras Beržinskas	+370 686 43311

### 2.4. OFFICIALS OF THE RALLY

<b>Clerk of the Course</b>	<b>Edvinas Vašteris</b>	<b>+370 612 50791</b>
Deputy Clerck of the Course	Tomas Savickas	+370 686 36522
Chief Secretary	Rasa Jakienė	+370 686 85146
Chief Scruttineer	Saulius Stanaitis	+370 687 31023
Competitors' relations officer	Remigijus Bilevičius	+370 686 07696
		+370 671 62265
Course and safety manager	Arūnas Lapinskas	+370 612 07151
Deputy Course and safety manager	Arturas Gailius	+370 655 72900
Chief doctor	Evaldas Torrau	+370 698 32313
Chief timekeeper	Gintautas Firantas	+370 686 86161
Press centre manager	Saulenis Pociūnas	+370 612 86613
<b>Director of rally</b>	<b>Ingrida Savickienė</b>	<b>+370 682 27744</b>

### III. PROGRAM

DATE	TIME	ACTION	PLACE
20-06-2014 (Friday)	<b>15:00</b>	Supplementary regulations publication, entries open	<a href="http://www.kelmesask.lt">www.kelmesask.lt</a> , <a href="http://www.lasf.lt">www.lasf.lt</a>
14-07-2014 (Monday)	<b>17:00</b>	Entries close	<a href="mailto:kelmesask@gmail.com">kelmesask@gmail.com</a> , fax +370 427 52737 by post A.Mackevičiaus str.. 27-2, Kelmė
16-07-2014 (Wednesday)	<b>15:00</b>	Start order publication	<a href="http://www.kelmesask.lt">www.kelmesask.lt</a> , <a href="http://www.lasf.lt">www.lasf.lt</a>
18-07-2014 (Friday)		Rally guide 2 publication	<a href="http://www.kelmesask.lt">www.kelmesask.lt</a> <a href="http://www.lasf.lt">www.lasf.lt</a>
25-07-2014 (Friday)	<b>7:30 – 11:00</b>	Administrative checking	Kelmė region museum, Dvaro str. 15, Kelmė
25-07-2014 (Friday)	<b>8:00 –19:00</b>	Reconnaissance	Kelmės raj.
25-07-2014 (Friday)	<b>14:00 – 16:00</b>	Scruttineering for Shakedown participants	Company „Girilis“, Vytauto Didžiojo str. 128, Kelmė
	<b>16:00-20:45</b>	Scruttineering for other crews	
25-07-2014 (Friday)	<b>18:30 – 21:00</b>	Test Stage (Shakedown)	Valpainiai. Kelmė district
25-07-2014 (Friday)	<b>21:30</b>	The first meeting of Stewards	Kelmė region museum, Dvaro str. 15, Kelmė
26-07-2014 (Saturday)	<b>8:30</b>	Start of the rally	TC 0, Tiesioji str. 2, Kelmė, N 55°37'4.14" E 22°57'5.65"
26-07-2014 (Saturday)	<b>18:50</b>	Finish of the rally	Draugystės park, Kelmė, N 55°37'44.0" E 22°56'43.5"
26-07-2014 (Saturday)	<b>20:30</b>	Official results publication	Draugystės park, Kelmė, N 55°37'44.0" E 22°56'43.5"
26-07-2014 (Saturday)	<b>21:00</b>	Awarding ceremony	Draugystės park, Kelmė, N 55°37'44.0" E 22°56'43.5"

### IV. RECONNAISSANCE

**4.1** All participants - i.e. first and second drivers of Lithuanian Auto Rally Championship 2014, of Lithuanian Rally Sprint Championship 2014, of Belorussian Rally Championship 2014 and all sportsmen intending or only having intentions to take part in the Rally “Žemaitija - 2014” shall be strictly prohibited - entering from 20-06-2014 15:00 till 25-07-2014 8:00 the roads marked in the map of prohibited roads. Those, who are registered as violators by the officials appointed by the LASF or the rally Organizer, will not be allowed to take part in the rally and their national federation will be informed about it.

The map of the prohibited roads (Appendix 4) will be announced on the web page [www.lasf.lt](http://www.lasf.lt) , [www.kelmesask.lt](http://www.kelmesask.lt) starting from 20-06-2014 (Friday) 15:00.

Rally „Žemaitija – 2014”

**4.2.** Persons named in clause 4.1, willing to move/cross the roads marked as prohibited for entry, must communicate their intentions in writing in advance to the LASF and the Organizer and obtain permission from the Organizer.

**Test stage, SS 6/ 9 will be carried out in prohibited area A, SS 1/4, 2/5, 3, 7/10, 8 ir 11 will be carried out in prohibited area B. Prohibited areas will be published with Supplementary Regulations 20-06-2014 (Friday).**

## V. DEFINITION AND PRINCIPAL OBLIGATIONS

<b>5.1 General information:</b>	<b>for LARC / BYRC participants</b>	<b>for LRSC participants</b>
Total distance of the rally course:	327,20 km	187,15 km
Number of stages:	11	6
Number of stages to be raced twice:	4	0
Total distance of special stages:	123,70 km	61,50 km.
Number of legs:	1	1
Number of sections:	3	2
Surface:	gravel - 100%	gravel - 100%

### 5.2. CARS

**5.2.1** LARC 2014 classifications are allowed to participate the international "N", "", "R", WRC, Super 2000 and Super 1600 cars as well as the national "SG", "L" cars, which are in conformity to Lithuanian Rally Championship regulations (LRC Regulations, articles 4.1-4.3).

**5.2.2** LARC 2014 classifications are allowed to participate national group "SG" cars which are in conformity to national technical requirements (LRSC Regulations, art. 4.2) and eligible vehicles, which are mentioned in art. 5.1 of this Supplementary Regulations

**5.2.3** BYRC 2014 classifications are allowed to participate cars which are in conformity to BAF national technical requirements (BYRC Regulations, art. 5.1

**5.2.4** The cars are allowed to participate in "Žemaitija - 2014" classification:

5.4.1 All eligible vehicles, which are mentioned in sub art. 5.1–5.3 of this Supplementary Regulations.

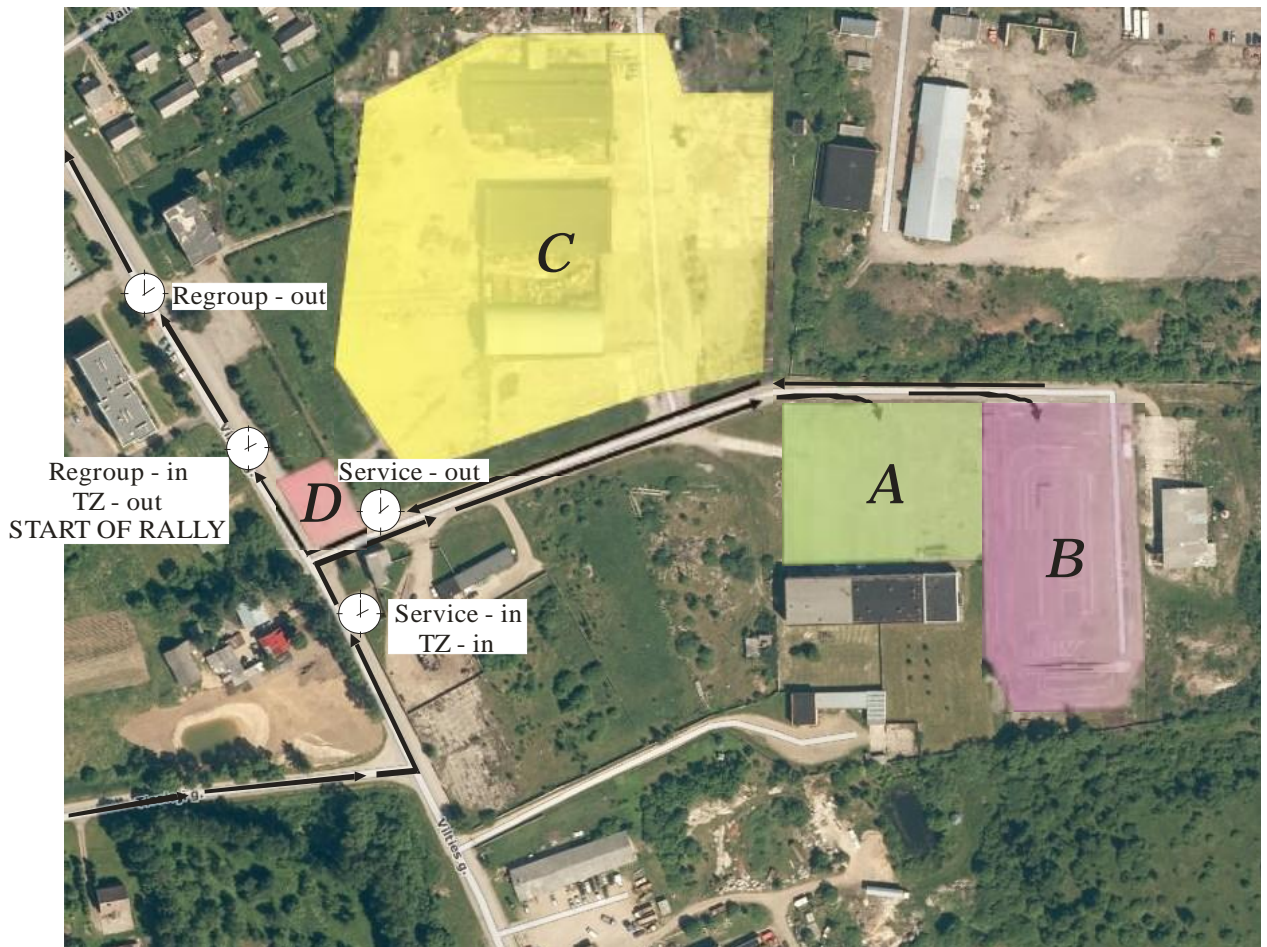
5.4.2 History eligible vehicles group "T" which are in conformity to national technical requirements for history rally cars.

5.4.3 Sportsmen of foreign countries may take part in the rally with cars, which are in conformity to FIA homologation or national technical requirements.

### 5.3. ENTRY FEES

Entry fees	Paying before	Paying after
	14-07-2014 17:00	14 -07 -2014 till 25-07-2014
LARC 8 united classification	800 LTL (230 Euro)	1200 LTL (350 Euro)
LARC 4,5,6,7 united classifications	1200 LTL (350Euro)	1800 LTL (530 Euro)
LARC 1,2,3 united classifications	1500 LTL (440Euro)	2250 LTL (655 Euro)
BYRC participants	1140 LTL (330 Euro)	1710 LTL (495 Euro)
LRSC participants	500 LTL (145 Euro)	750 LTL ( 220Euro)
Only rally "Žemaitija - 2014" participants	800 LTL (230 Euro)	1200 LTL (350 Euro)

## VI. SERVICE PARK



Areas: A - 1 - 30; B - 30 - ...; C - trailers; D - refuel

6.1 During the rally servicing of rally cars shall be allowed in the service park specified in the Road Book only. Refueling is allowed only in the refueling zones (art 58.1-58.2 of T-2014). These places will be mentioned in the Road Book.

6.1.1 Service Park A/B is open from 8:00 till 22:00 26-07-2014 (Saturday). Address of the Service park: Tiesioji str. 2, Kelmė

6.1.2 Only one service car is allowed into the Service park. Special sticker issued by the Organizer must be stuck on the service car wind screen. In case of failure to meet this requirement will be treated as pecuniary offence. Reconnaissance cars are not allowed to enter the Service Park. **Service vehicles with trailers will be allowed enter into the Service Park. Please don't leave your trailers in other places.**

6.1.3 **It is forbidden to wash** the parts and machineries of cars that are using technical oils (engines, gear boxes and similar) in Service park.

6.1.4 In the place of servicing in the Service Park the waterproof fabric (minimum 4x4 m) must be laid under a rally car. In the refueling zone a container must be laid under the place of the neck for tank filling (to collect spilled fuel). Using pumps for refueling, the ends of the tube must be equipped with safety tapes or valves.

**NOTE: Service Park security protects traffic safety and maintain public order, but is not responsible for the inventory in the service areas. Taking care of your property security.**



## VIII. TEST STAGE

Test stage (shakedown) will be carried out 25-07-2014 (Friday) from 18:30 till 21:00 in prohibited area A (see the map). Details will be specified in rally guide 2 on the web page [www.lasf.lt](http://www.lasf.lt) , [www.kelmesask.lt](http://www.kelmesask.lt) starting from 18-07-2014 (Friday) 15:00.

## IX. MEDICAL AID

The nearest medical centers:

Kelmė hospital, Nepriklausomybės str.. 2, Kelmė  
Telšiai hospital, Kalno str. 40, Telšiai  
Šiauliai hospital, V. Kudirkos str. 99, Šiauliai

## X. ACCOMMODATION PLACES

- 1. Manor of Pakėvis**, Dvaro str. 54, Pakėvis., Vaiguva subdistrict., LT - 86414 Kelmė district. Tel. (+370 427) 61088, Mob. +370 610 31315
- 2. The mill of Užventis** , Užventis, Kelmė district., Mob.: +370 682 14 007 (Alvydas), +370 682 14 008 (Milda)
- 3. Motel „Samana“**, Taikos str. 2, Tytuvėnai, Kelmė district., Tel. (+370 427) 56 249, fax. (+370 427) 56 249, mob. +370 618 70718
- 4. Recreation center at the lake Gilius** , Tytuvėnai, Kelmė district., Tel. (+370 427) 56 991, mob.+370 611 30 487
- 5. Farmstead „Miego klinika“**, Raudsparnė village, Kelmė district., Mob. +370 612 22 203
- 6. Farmstead „5 sezonas“**, Rėžaliai village., Tytuvėnai subdistrict, Kelmė district, Mob. +370 611 16 797
- 7. Farmstead „Ažuolų slėnis“**, Targauskiai village., Kukečiai subdistrict, Kelmė district, Mob.: +370 687 32 737, 8 655 69 720
- 8. Farmstead „Miško vingis“**, Tytuvėnų apylinkių seniūnija, Kelmė district, Mob+370 614 75 086
- 9. Farmstead „Karpynė“**, Karpynės str. 2, Gabšiai village. Raseiniai district. LT-60192, Tel.: +370-428 70123 , Mob.: +370-650 77437
- 10. Kelme professional training center hostel**, Janonio str.11, LT-86132 Kelmė, Tel./fax: (+370 427) 61075

## XI. ACCREDITATION

The completed accreditation form send e-mail to [kelmesask@gmail.com](mailto:kelmesask@gmail.com) till 23-07-2014 17:00. Decisions on the media (the MIP) for accreditation shall bring rally “Žemaitija-2014” director, received representatives of the MIP and the completed and signed the Accreditation form .Original completed and signed accreditation form must be presented in person by picking up accreditation cards.

### Media representatives will be accredited:

Place: The Kelme region museum, Dvaro str. 15, Kelme .

Date: 25-07-2014 (Friday)

Time: 12:00 till 21:00 .

Place: Draugystės Park, Kelmė, N 55 ° 37'44 .0" E 22 ° 56'43 .5" .

Date: 26-07-2014 (Saturday)

Time: 7:30 till 9:00 .

## XII. FUEL

Rally participants are allowed to use the fuel, which is provided in Article 4.7 of 2014 LARC Regulations.

### XIII. ITINERARY CARDS

#### 2014 LARC III EVENT AND BYRC II EVENT

LK/TC GR/SS	PAVADINIMAS NAME	GR km	Be GR Liaison km	LK viso TC total km	Laiko norma Target time min	Vid.greit. Aver.speed km/h	1 aut.laikas 1st car due	
<b>Ratas / Leg 1</b>								
<b>Sekcija / Section 1</b>								
0	TZ - in						09:00	
0A	TZ - out				10		09:10	
1			16,10	16,10	17	54,70	09:27	
<b>GR/SS-1</b>	<b>A1</b>	<b>8,50</b>					<b>09:30</b>	
2			14,80	23,30	27	51,80	09:57	
<b>GR/SS-2</b>	<b>B1</b>	<b>13,00</b>					<b>10:00</b>	
	<b>Kuro zona / Refuel 1</b>	<b>21,50</b>	<b>35,20</b>	<b>56,70</b>				
	<b>Iki sekančios / To next</b>	<b>30,90</b>	<b>46,20</b>	<b>77,10</b>				
3			7,10	20,10	27	44,65	10:27	
<b>GR/SS-3</b>	<b>C</b>	<b>9,40</b>					<b>10:30</b>	
4			3,70	13,10	17	46,20	10:47	
<b>GR/SS-4</b>	<b>A 2</b>	<b>8,50</b>					<b>10:50</b>	
5			14,80	23,30	27	51,80	11:17	
<b>GR/SS-5</b>	<b>B2</b>	<b>13,00</b>					<b>11:20</b>	
5A	Service A - in		24,90	37,90	40	50,70	12:00	
	<b>Service A ( Kelmė 1 )</b>	<b>52,40</b>	<b>81,40</b>	<b>133,80</b>	<b>30</b>			
5B	Service A-out / Refuel 2						12:30	
<b>Sekcija / Section 2</b>								
5C	Regroup 1 - in		1,50	1,50	15	9,00	12:45	
5D	Regroup 1 - out		<b>NAUJAS STARTO LAIKAS / NEW START TIME</b>					13:45
6			20,90	20,90	27	46,45	14:12	
<b>GR/SS-6</b>	<b>D1</b>	<b>8,40</b>					<b>14:15</b>	
	<b>Kuro zona / Refuel 3</b>	<b>8,40</b>	<b>26,45</b>	<b>34,85</b>				
	<b>Iki sekančios / To next</b>	<b>22,20</b>	<b>48,65</b>	<b>70,85</b>				
7			6,00	14,40	22	39,30	14:37	
<b>GR/SS-7</b>	<b>E1</b>	<b>10,20</b>					<b>14:40</b>	
8			13,70	23,90	27	53,10	15:07	
<b>GR/SS-8</b>	<b>F</b>	<b>12,00</b>					<b>15:10</b>	
8A	Service B - in		33,00	45,00	45	60,00	15:55	
	<b>Service B ( Kelmė 2 )</b>	<b>30,60</b>	<b>75,10</b>	<b>105,70</b>	<b>30</b>			
8B	Service B - out / Refuel 4						16:25	
<b>Sekcija /Section 3</b>								
8C	Regroup 2 - in		0,05	0,05	10	0,30	16:35	
8D	Regroup 2 - out		<b>NAUJAS STARTO LAIKAS / NEW START TIME</b>					16:45
9			20,60	20,60	27	45,80	17:07	
<b>GR/SS-9</b>	<b>D2</b>	<b>15,40</b>					<b>17:15</b>	
	<b>Kuro zona / Refuel 5</b>	<b>15,40</b>	<b>24,70</b>	<b>40,10</b>				
	<b>Iki finišo / To the finish</b>	<b>25,30</b>	<b>22,30</b>	<b>47,60</b>				
10			5,95	21,35	32	40,00	17:47	
<b>GR/SS-10</b>	<b>E2</b>	<b>10,20</b>					<b>17:50</b>	
11			0,90	11,10	12	55,50	18:02	
<b>GR/SS-11</b>	<b>G</b>	<b>15,10</b>					<b>18:05</b>	
11A	Kelmė , UP / PF		19,50	34,60	40	51,90	18:45	
<b>Viso Sekcija 3 / Total Section 3</b>		<b>40,70</b>	<b>47,00</b>	<b>87,70</b>				
<b>Viso ralyje / Total Rally (37,8 %)</b>		<b>123,70</b>	<b>203,50</b>	<b>327,20</b>				

## 2014 LRSC II EVENT

LK/TC GR/SS	PAVADINIMAS NAME	GR km	Be GR Liaison km	LK viso TC total km	Laiko norma Target time min	Vid.greit. Aver.speed km/h	1 aut.laikas 1st car due	
<b>Ratas / Leg 1</b>								
<b>Sekcija / Section 1</b>								
0	TZ - in						08:30	
0A	TZ - out				10		08:40	
1			16,10	16,10	17	54,70	08:57	
<b>GR/SS-1</b>	<b>A</b>	<b>8,50</b>					<b>09:00</b>	
2			14,80	23,30	27	54,20	09:27	
<b>GR/SS-2</b>	<b>B</b>	<b>13,00</b>					<b>09:30</b>	
	<b>Kuro zona / Refuel 1</b>	<b>21,50</b>	<b>35,20</b>	<b>56,70</b>				
	<b>Iki sekančios / To next</b>	<b>9,40</b>	<b>16,20</b>	<b>25,60</b>				
3			7,10	20,10	27	44,65	09:57	
<b>GR/SS-3</b>	<b>C</b>	<b>9,40</b>					<b>10:00</b>	
5A	Service A - in		13,40	22,80	30	45,60	10:30	
	<b>Service B ( Kelmė 2 )</b>	<b>30,90</b>	<b>51,40</b>	<b>82,30</b>	<b>30</b>			
5B	Service A-out / Refuel 2						11:00	
<b>Sekcija / Section 2</b>								
5C	Regroup 1 - in		1,50	1,50	15	9,00	11:15	
5D	Regroup 1 - out		<b>NAUJAS STARTO LAIKAS / NEW START TIME</b>					13:15
6			20,90	20,90	27	37,80	13:42	
<b>GR/SS-6</b>	<b>D</b>	<b>8,40</b>					<b>13:45</b>	
	<b>Kuro zona / Refuel 3</b>	<b>8,40</b>	<b>26,45</b>	<b>34,85</b>				
	<b>Iki sekančios / To next</b>	<b>22,20</b>	<b>47,80</b>	<b>70,00</b>				
7			6,00	14,40	22	39,30	14:07	
<b>GR/SS-7</b>	<b>E</b>	<b>10,20</b>					<b>14:10</b>	
8			13,70	23,90	27	53,10	14:37	
<b>GR/SS-8</b>	<b>F</b>	<b>12,00</b>					<b>14:40</b>	
11A	Kelmė , UP / PF		32,15	44,15	50	53,00	15:30	
<b>Viso Sekcija 2 / Total Section 2</b>		<b>30,60</b>	<b>74,25</b>	<b>104,85</b>				
<b>Viso ralyje / Total Rally (32,8 %)</b>		<b>61,50</b>	<b>125,65</b>	<b>187,15</b>				